

Cottages & Flats Layout

We have 2 Cottages and 2 Flats providing basic accommodation, ideal for small groups.

Cottage 1 8 single beds + 1 single mattress* (which can be set up on the floor).

Cottage 2 1 queen bed, 9 single beds + 1 single mattress* (which can be set up on the floor).

There is a fold out sofa/double bed* in each Cottage lounge room.

* Own linen required for these.

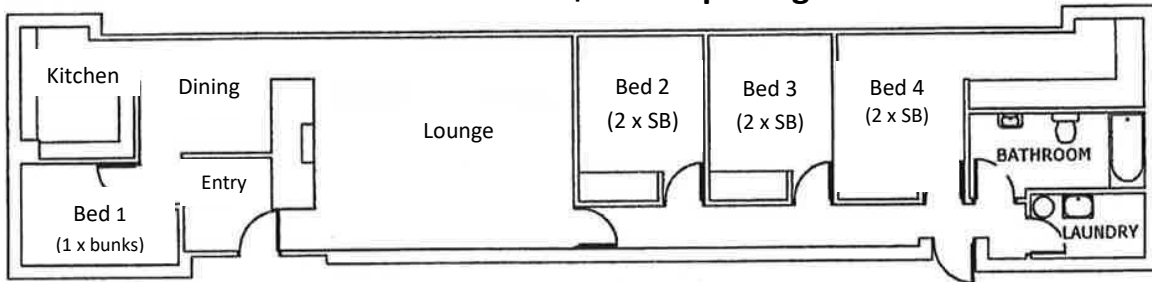
Both cottages have a kitchen including fridge, microwave, toaster, jug, toaster oven/grill, crockery etc and a BBQ available for use, located outside Cottage 2.

Flat 1 & 2 Two single beds & ensuite in each, TV, bar fridge, microwave, jug & toaster.

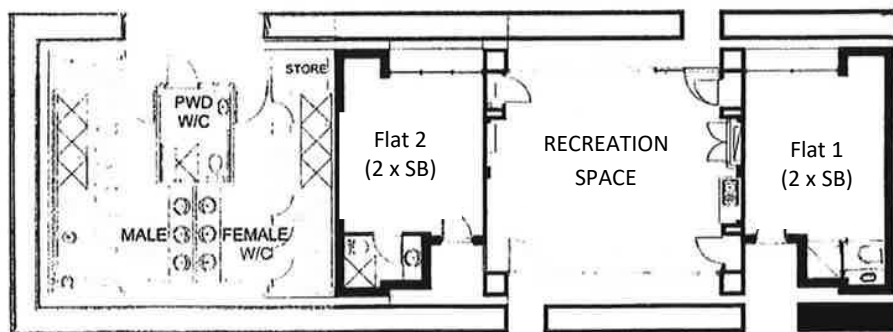
Recreation Room located between two flats & can be used with Cottage hire, (Includes tables, chairs, microwave, cooktop, fridge, crockery & cutlery)

Amenities Block located on the western end of the flats, has Male & Female toilets and showers & a disabled shower & toilet, this is available for use with Cottage hire.

COTTAGE 1 - \$220.00 per night



FLATS - \$127.00 per night



COTTAGE 2 - \$250.00 per night

